



---

# **PROJECT 2023-28**

# **EAST ALTON NO. 1 PUMP STATION FOREBAY SLUICE GATE ACTUATOR REPLACEMENT**

**SEPTEMBER 2024**

---

**Bids Due Date:** 30 September 2024

**Projected Award Date:** 30 September 2024

**Project Location:** 2750 Berm Highway, East Alton, IL 62024

**Project Description:** Provide, including delivery, three (3) electric sluice gate actuators and mounting bases that will fit existing stem and sluice gates. The gate assembly weighs approximately 21,000 lbs. The gate itself is 108" wide by 132" tall.

**Site Visits:** Contact Kevin Williams to schedule a site visit. 618-401-7226 or [kwilliams@wrdd.org](mailto:kwilliams@wrdd.org).

A

B

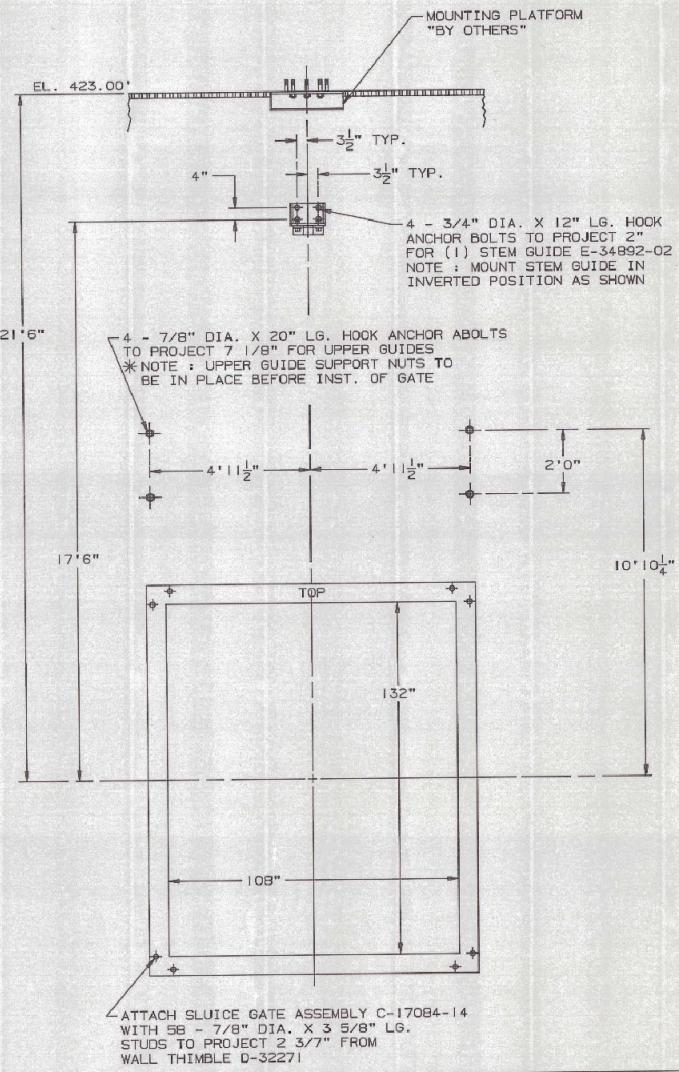
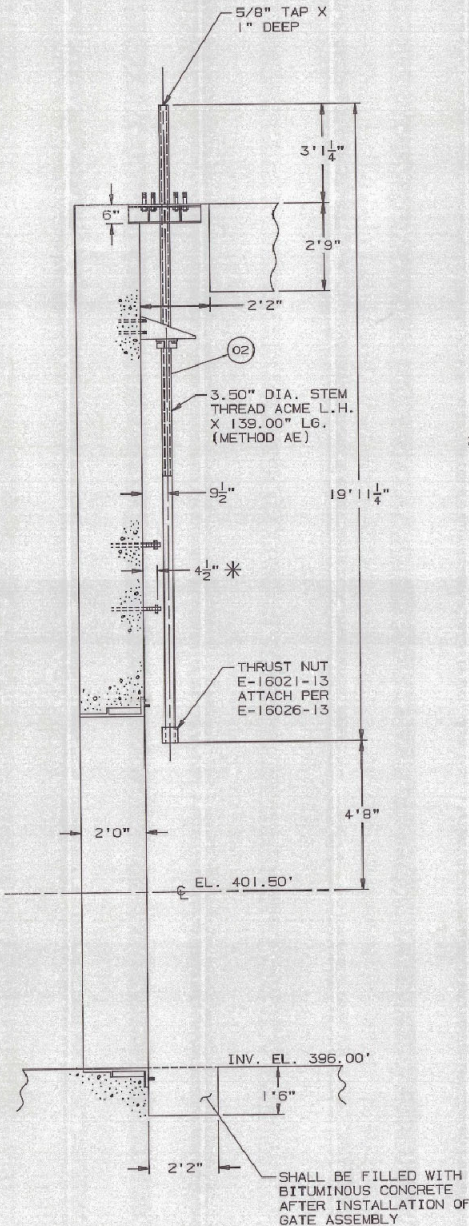
C

D

E



8 - 1 1/8" DIA. STUDS EQUALLY SPACED ON A 13 7/16" D.B.C. "BY OTHERS" TO PROJECT 2 7/8" FOR EIM 3602-0 ELEC. OPER. WITH PEDESTAL D-28560-04 AND STEM COVER F-11307-49



GATE CAPACITY  
 MAX. SEAT. HD. 54.0' UNSEAT. 22.0'  
 OPER. HD. FROM  $\phi$  SEAT. 6.5' UNSEAT. 0.0'  
 GATE ASSEMBLY WEIGHT: 20915\*

PROJECT : ALTON PUMP STATION  
 ALTON, IL  
 GATE LOCATION : FOREBAY  
 GATE NO. QUANTITY : 3  
 ITEM NO. 1 FOR MATERIAL SEE SPECIFICATION SHEET : 70618-2

FILE-2

RODNEY HUNT COMPANY, ORANGE, MASS., 01364

THIS PRINT IS THE PROPERTY OF RODNEY HUNT COMPANY THOSE WHO ACCEPT THIS PRINT AGREE THAT IT SHALL NOT BE GIVEN, LOANED, EXHIBITED OR COPIED AND THAT IT SHALL BE RETURNED UPON REQUEST TO RODNEY HUNT COMPANY NOVEL AND PATENTABLE FEATURES SHOWN ARE PROTECTED BY U.S. AND OR FOREIGN PAT. AND PAT. PEND.		INST. : 108" X 132" SLUICE GATE	
		SERIES : HY-Q 120	
		FOR : MURPHY COMPANY	
DRAWN DLL	DESIGNED WEL	DATE 4/1/87	
CHECKED DRL	APPROVED	SCALE N.T.S.	
INDEX SYMBOL	IBM	ORDER NO. 70618-2	DWG. NO. D-32267

BRUNING 4022 676537-1

DEC. DIM.	TOLERANCE UNLESS OTHERWISE SPECIFIED		
	MACHINE	CAST	FABRICATE
1 PLACE	± 0.060	± 0.250	± 0.250
2 PLACE	± 0.030	± 0.125	± 0.125
3 PLACE	± 0.015	± 0.060	± 0.060
ANGLE	± 1° 0'	± 2° 0'	± 2° 0'

Issued