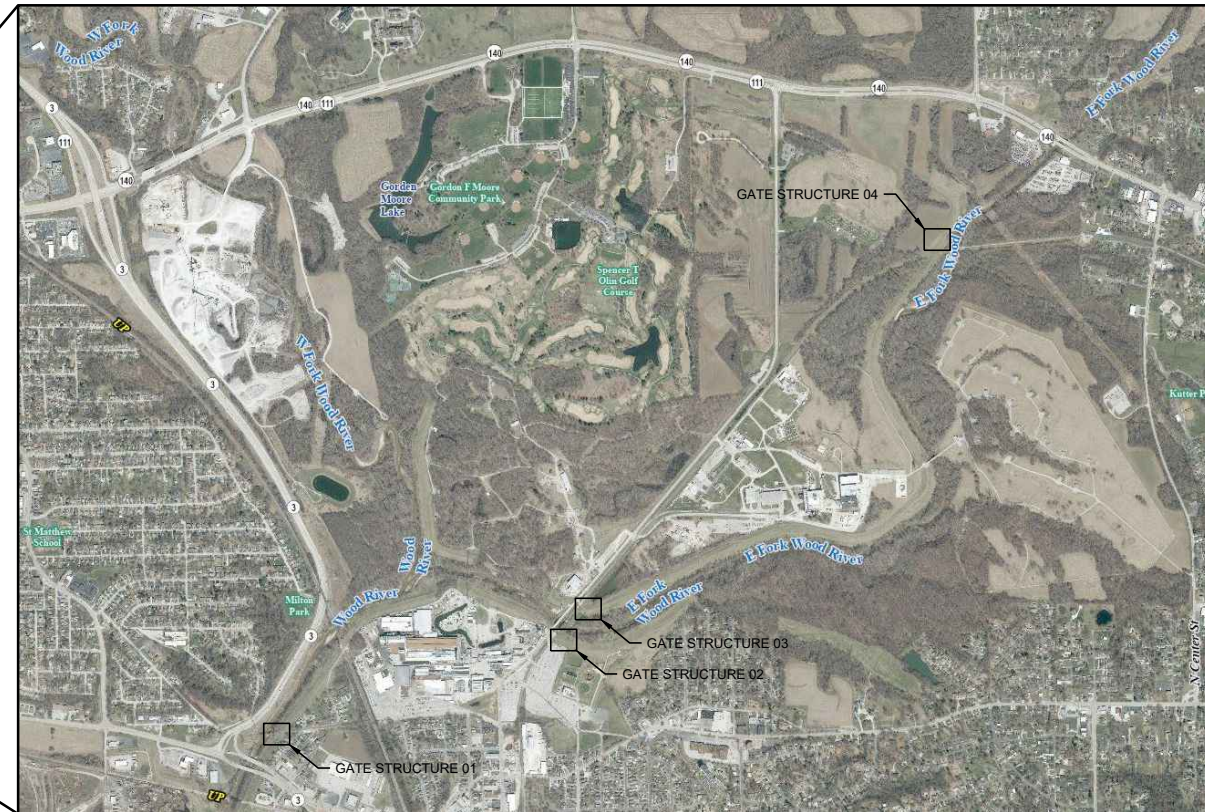


WOOD RIVER DRAINAGE AND LEVEE DISTRICT BETHALTO INTERCEPTOR GATE STRUCTURE REHAB

WOOD RIVER, ILLINOIS
SEPTEMBER 2024



ILLINOIS



PROJECT LOCATION MAP

INDEX TO DRAWINGS

SHEET NUMBER	DRAWING NUMBER	DRAWING DESCRIPTION
001 - GENERAL		
1	001-G-0	COVER
2	001-G-2	GENERAL LEGEND, SYMBOLS, AND ABBREVIATIONS
3	001-G-3	CIVIL LEGEND
100 - GATE STRUCTURE 01:		
002 - SITE DEVELOPMENT		
4	002-CY-1	PLAN
100 - GATE STRUCTURE 01		
5	100-RSM-1	PLAN
6	100-RSM-2	SECTION
200 - GATE STRUCTURE 02:		
002 - SITE DEVELOPMENT		
7	002-CY-2	PLAN
200 - GATE STRUCTURE 02		
8	200-RSM-1	PLAN
9	200-RSM-2	SECTION
300 - GATE STRUCTURE 03:		
002 - SITE DEVELOPMENT		
10	002-CY-3	PLAN
300 - GATE STRUCTURE 03		
11	300-RSM-1	PLAN
12	300-RSM-2	SECTION
400 - GATE STRUCTURE 04:		
002 - SITE DEVELOPMENT		
13	002-CY-4	PLAN
14	002-CK-1	POTENTIAL ACCESS
400 - GATE STRUCTURE 04		
15	400-RSM-1	PLAN
16	400-RSM-2	SECTION
999 - GENERAL NOTES SCHEDULES AND STANDARD DETAILS		
17	999-M-1	MECHANICAL

PREPARED FOR



543 WEST MADISON AVENUE
WOOD RIVER, ILLINOIS, 62095

PREPARED BY



12400 OLIVE BLVD., SUITE 120
ST. LOUIS, MISSOURI 63141
636-536-7042

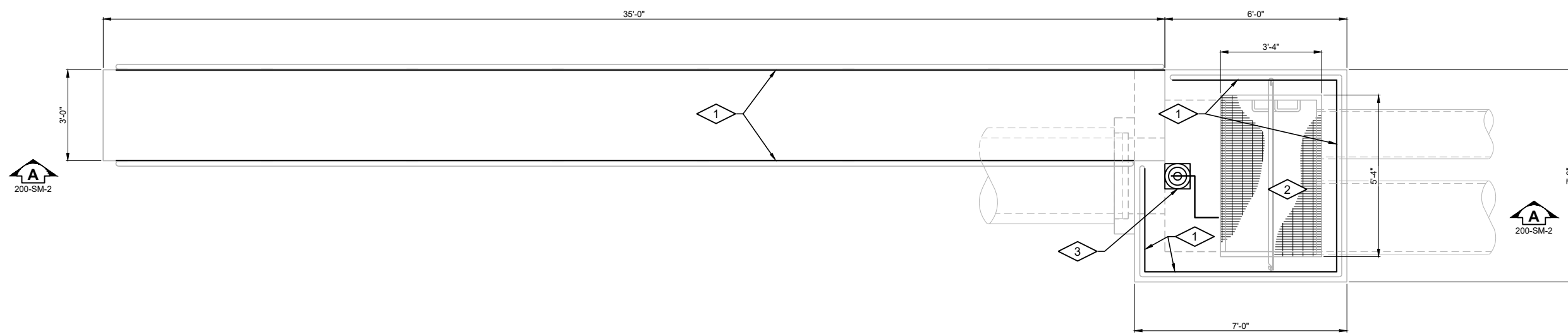
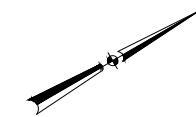
ISSUED FOR BID SUBMITTAL

GENERAL NOTES:

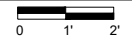
1. CONTRACTOR TO FIELD VERIFY EXISTING CONDITIONS, DIMENSIONS, AND ELEVATIONS PRIOR TO CONSTRUCTION AND/OR FABRICATION.

PLAN NOTES:

1. INSTALL NEW TOE PLATE ON EXISTING RAILING IF OWNER ACCEPTS ALTERNATE 1. PROVIDE SLOTTED HOLES IN SPLICE PLATES AT LOCATIONS AS NOTED IN SECTION 05 52 00.
2. REMOVE AND REPLACE GRATING IF OWNER ACCEPTS ALTERNATE 3. REUSE EXISTING SUPPORTS. NEW GRATING TO MATCH MATERIAL AND THICKNESS OF EXISTING GRATING-FIELD VERIFY EXISTING CONDITIONS.
3. REMOVE AND REPLACE EXISTING SLIDE GATE, PEDESTAL, ACTUATOR, ANCHOR BOLTS, STEM, STEM GUIDES AND ALL OTHER APPURTENANT COMPONENTS.



GRADE PLAN



Revision Number	Revision Description	Drawn By	Checked By	Date

Designed By	SDR/JYB
Drawn By	DSD
Checked By	NWC/TJB
Approved By	JAG
Filename	200SMP1.DWG
Project No.	14381_WO4
Project Date	SEPT 2024

WOOD RIVER DRAINAGE AND LEVEE DISTRICT
BETHALTO INTERCEPTOR
GATE STRUCTURE REHAB
WOOD RIVER
GATE STRUCTURE 02
PLAN



Sheet No.	8
Drawing No.	

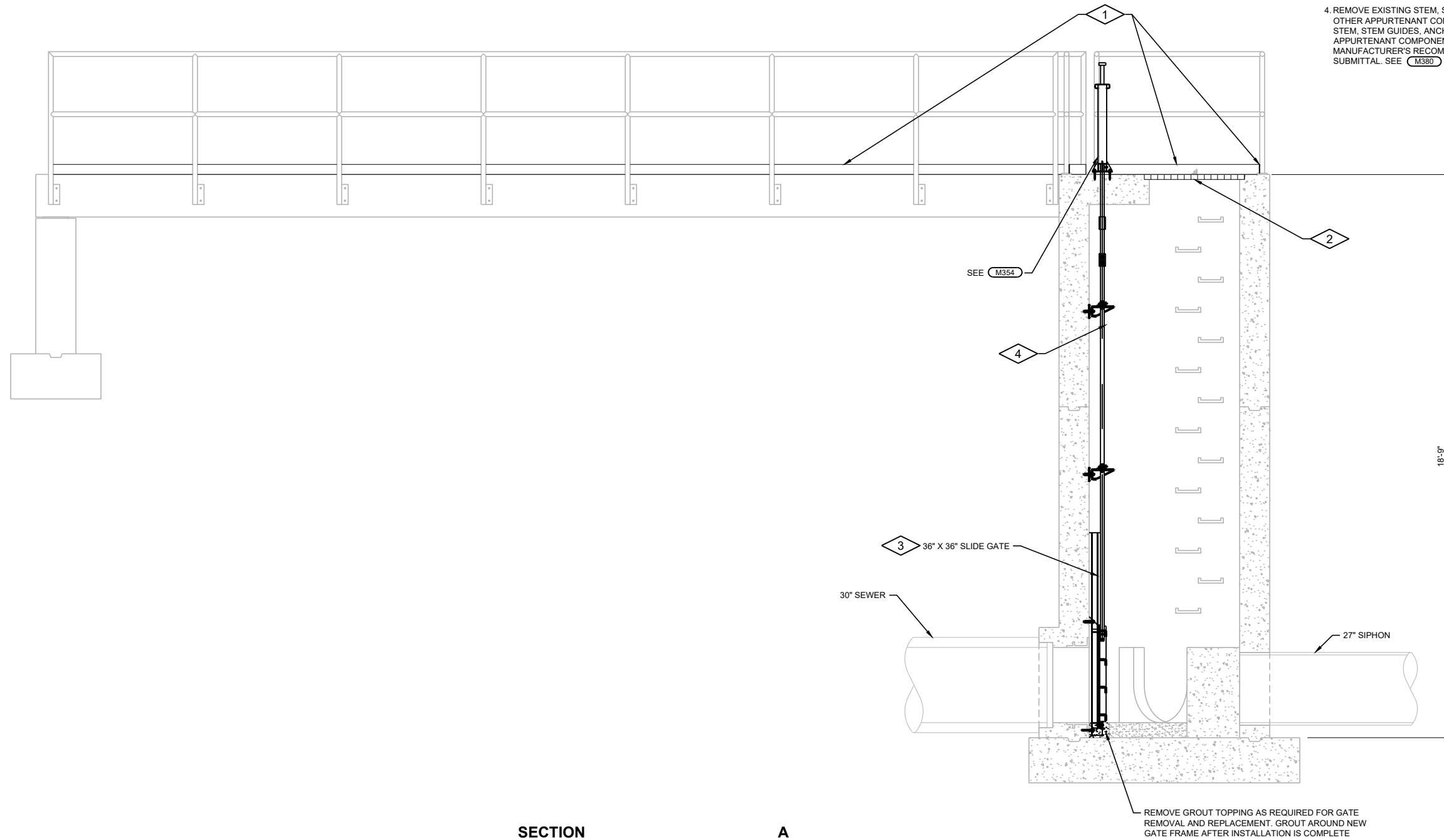
200-RSM-1

GENERAL NOTES:

1. CONTRACTOR TO FIELD VERIFY EXISTING CONDITIONS, DIMENSIONS, AND ELEVATIONS PRIOR TO CONSTRUCTION AND/OR FABRICATION.

PLAN NOTES:

1. INSTALL NEW TOE PLATE ON EXISTING RAILING IF OWNER ACCEPTS ALTERNATE 1. PROVIDE SLOTTED HOLES IN SPLICE PLATES AT LOCATIONS AS NOTED IN SECTION 05 52 00.
2. REMOVE AND REPLACE GRATING IF OWNER ACCEPTS ALTERNATE 3. REUSE EXISTING SUPPORTS. NEW GRATING TO MATCH MATERIAL AND THICKNESS OF EXISTING GRATING-FIELD VERIFY EXISTING CONDITIONS.
3. REMOVE EXISTING SLIDE GATE AND REPLACE WITH NEW SLIDE GATE.
4. REMOVE EXISTING STEM, STEM GUIDES, ANCHOR BOLTS, AND OTHER APPURTENANT COMPONENTS. REPLACE WITH NEW STEM, STEM GUIDES, ANCHOR BOLTS, AND OTHER APPURTENANT COMPONENTS IN ACCORDANCE WITH GATE MANUFACTURER'S RECOMMENDATIONS AND APPROVED SUBMITTAL. SEE M380



SECTION



A

200-SM-1

Revision Number	Revision Description	Drawn By	Checked By	Date

Designed By	SDR/JYB
Drawn By	DSD
Checked By	NWC/TJB
Approved By	JAG
Filename	200SMP1.DWG
Project No.	14381_WO4
Project Date	SEPT 2024

WOOD RIVER DRAINAGE AND LEVEE DISTRICT
BETHALTO INTERCEPTOR
GATE STRUCTURE REHAB
WOOD RIVER
GATE STRUCTURE 02
SECTION



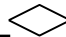
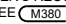
Sheet No. 9

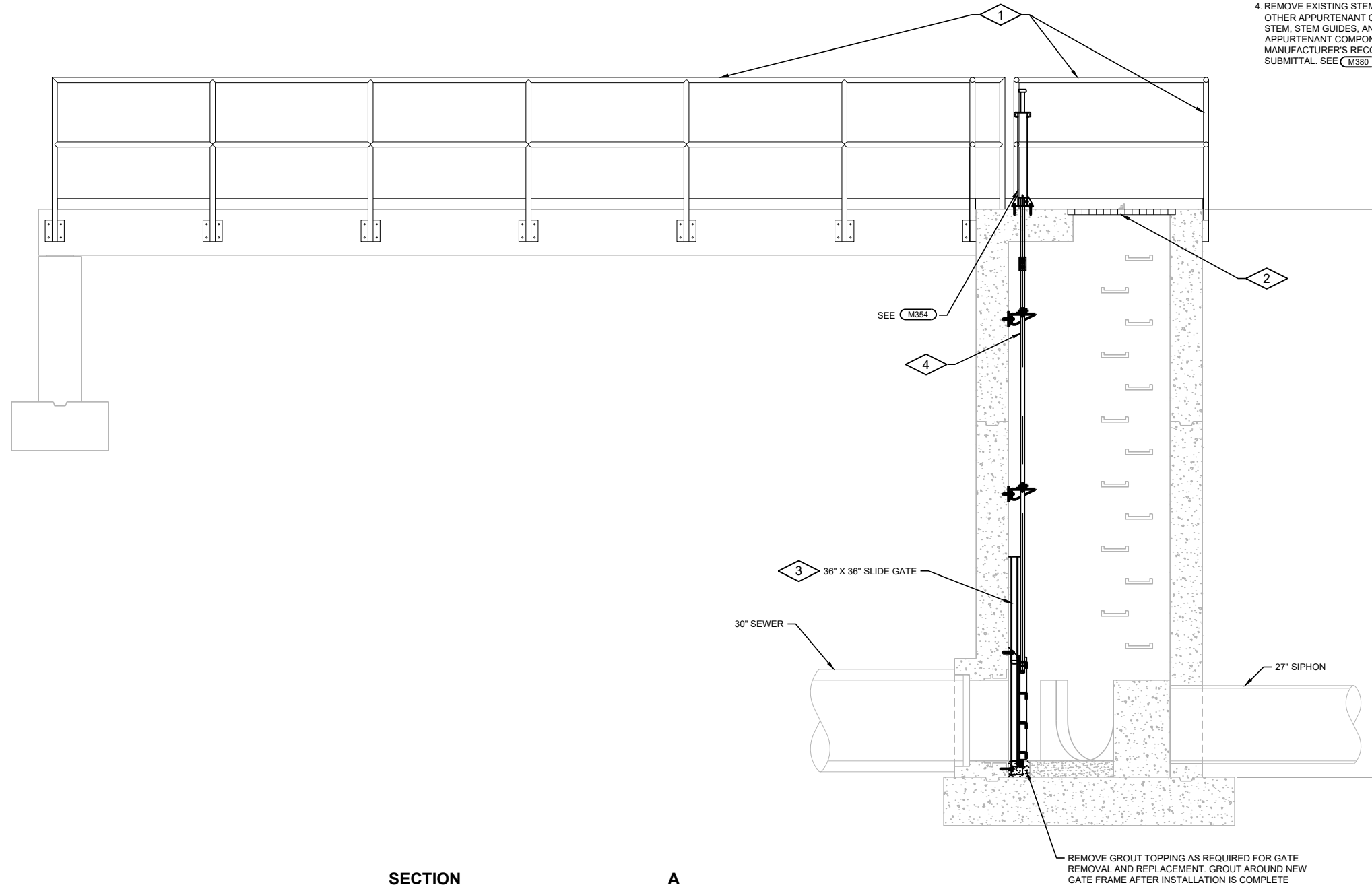
Drawing No. 200-RSM-2

GENERAL NOTES:

1. CONTRACTOR TO FIELD VERIFY EXISTING CONDITIONS, DIMENSIONS, AND ELEVATIONS PRIOR TO CONSTRUCTION AND/OR FABRICATION.

PLAN NOTES:

1. REMOVE EXISTING FENCE AND INSTALL NEW SIDE MOUNTED ALUMINUM RAILING AND TOE PLATE IF OWNER ACCEPTS ALTERNATE 2. SEE  400-SM-1
2. REMOVE AND REPLACE GRATING IF OWNER ACCEPTS ALTERNATE 3. REUSE EXISTING SUPPORTS. NEW GRATING TO MATCH MATERIAL AND THICKNESS OF EXISTING GRATING-FIELD VERIFY EXISTING CONDITIONS.
3. REMOVE EXISTING SLIDE GATE AND REPLACE WITH NEW SLIDE GATE.
4. REMOVE EXISTING STEM, STEM GUIDES, ANCHOR BOLTS, AND OTHER APPURTENANT COMPONENTS. REPLACE WITH NEW STEM, STEM GUIDES, ANCHOR BOLTS, AND OTHER APPURTENANT COMPONENTS IN ACCORDANCE WITH GATE MANUFACTURER'S RECOMMENDATIONS AND APPROVED SUBMITTAL. SEE  M380



SECTION



A

400-SM-1

Revision Number	Revision Description	Drawn By	Checked By	Date

Designed By	SDR/JYB
Drawn By	DSD
Checked By	NWC/TJB
Approved By	JAG
Filename	400SMP1.DWG
Project No.	14381_WO4
Project Date	SEPT 2024

WOOD RIVER DRAINAGE AND LEVEE DISTRICT
 BETHALTO INTERCEPTOR
 GATE STRUCTURE REHAB
 WOOD RIVER
 GATE STRUCTURE 04
 SECTION



Sheet No. 16
 Drawing No.

400-RSM-2

